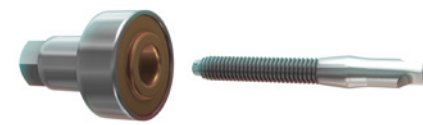


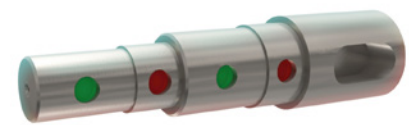
## Accessories & Consumables

To see our wide range of accessories and consumables, please visit: [www.safetrack.se](http://www.safetrack.se)



### Assembly tool

M10 – SAFE 59102BD  
M12 – SAFE 59101BD



### Hole Gauge / Counterhold

Same for M10/M12 – SAFE 591085



### Impact wrenches

Battery powered 18V,  
610 Nm! – SAFE 591400



### Torque wrench

SAFE 59106



### Drill – Ø13,5 mm

Twist Drill-Line – SAFE 59SBW136  
+ Adapter for Weldon – SAFE 59WA1316



### Super drilling paste

SAFE 59579

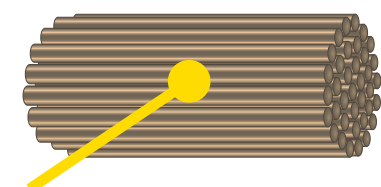


### Drill – Ø19 mm

Rail-Line T.C.T Core Drill – SAFE 59RLK19R  
Blue-Line Rail Core Drill – SAFE 59SBK190

## SafeCable® – theft deterrent cable

SafeCable® is made of soft annealed steel and copper wires to withstand vibrations in the rail and to make it as flexible as possible. Use standard cable lugs and crimping tool for connections. It has no scrap value. It is magnetic - thieves who check with magnets for copper avoid stealing the cable.



Copper and soft annealed steel



Metallurgical bonded

## Training/Services

Safetrack AB has extensive experience in the railway industry and offers the very highest service and customer satisfaction with training on site.



## Safetrack Baavhammar AB

Möllebergavägen 339-24  
S-245 93 Staffanstorps  
SWEDEN

Tel: +46 (0)40 44 53 00  
Fax: +46 (0)40 44 55 53  
e-mail: [sales@safetrack.se](mailto:sales@safetrack.se)

[www.safetrack.se](http://www.safetrack.se)

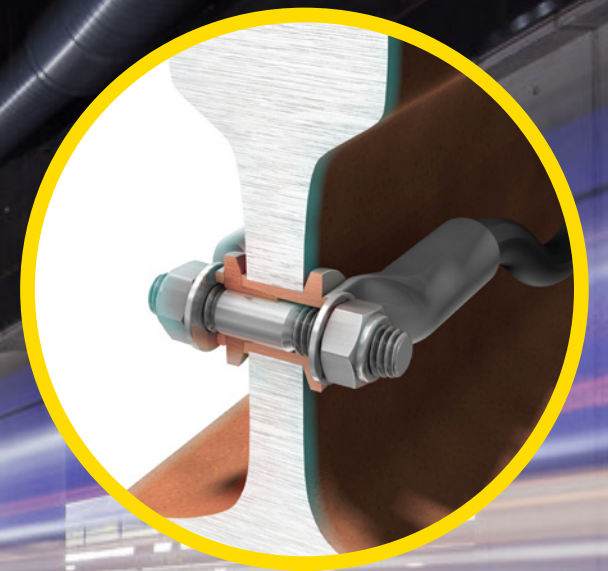


Safely connecting the world ...



## SafePlug®

Developed for the toughest environment conditions



### Approved by



Norway



Finland



Austria



Turkey



Sweden



Sweden

Patented cable connection system for grounding, signalling and return current

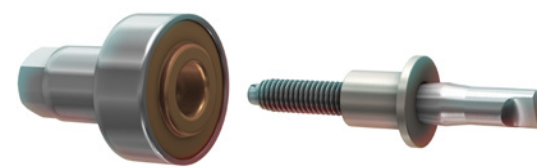
## SafePlug® – Rail web electrical connection system

SafePlug® is the new generation of rail web connections with optimal performance. SafePlug® is developed to obtain as low transition resistance as possible between the cable lug and rail. The patented contact cone and the high torque design (50–75 %

higher torque than other brands), allows a much greater contact pressure and maintains the pressure to withstand vibrations in the rail even in large temperature changes. The electrical interfaces and contact surface become also much larger thanks to this design.

### More efficient assembly

Users do not have to use heavy hydraulics in the work place. Use the small mounting tool and the same torque wrench or impact wrench used to assemble the cables, to expand the copper bushing in the drilled hole in the rail. This means significantly lower investment costs and less need for maintenance service.

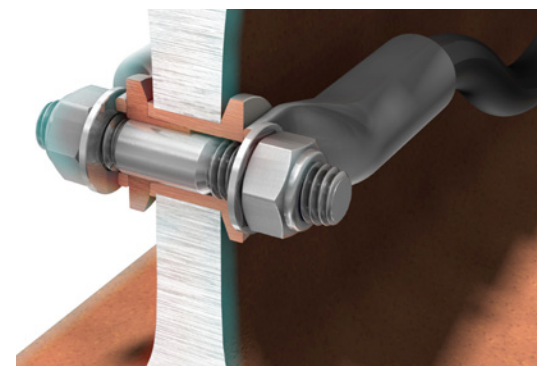


Lightweight pocket-sized tool

### SafePlug® Combi – Flexible cable connections of one or more cables

SafePlug® Combi has the same technology to resist differences in temperature, vibration and corrosion as the rest of the SafePlug® range. This is thanks to the revolutionary patented contact cone technology.

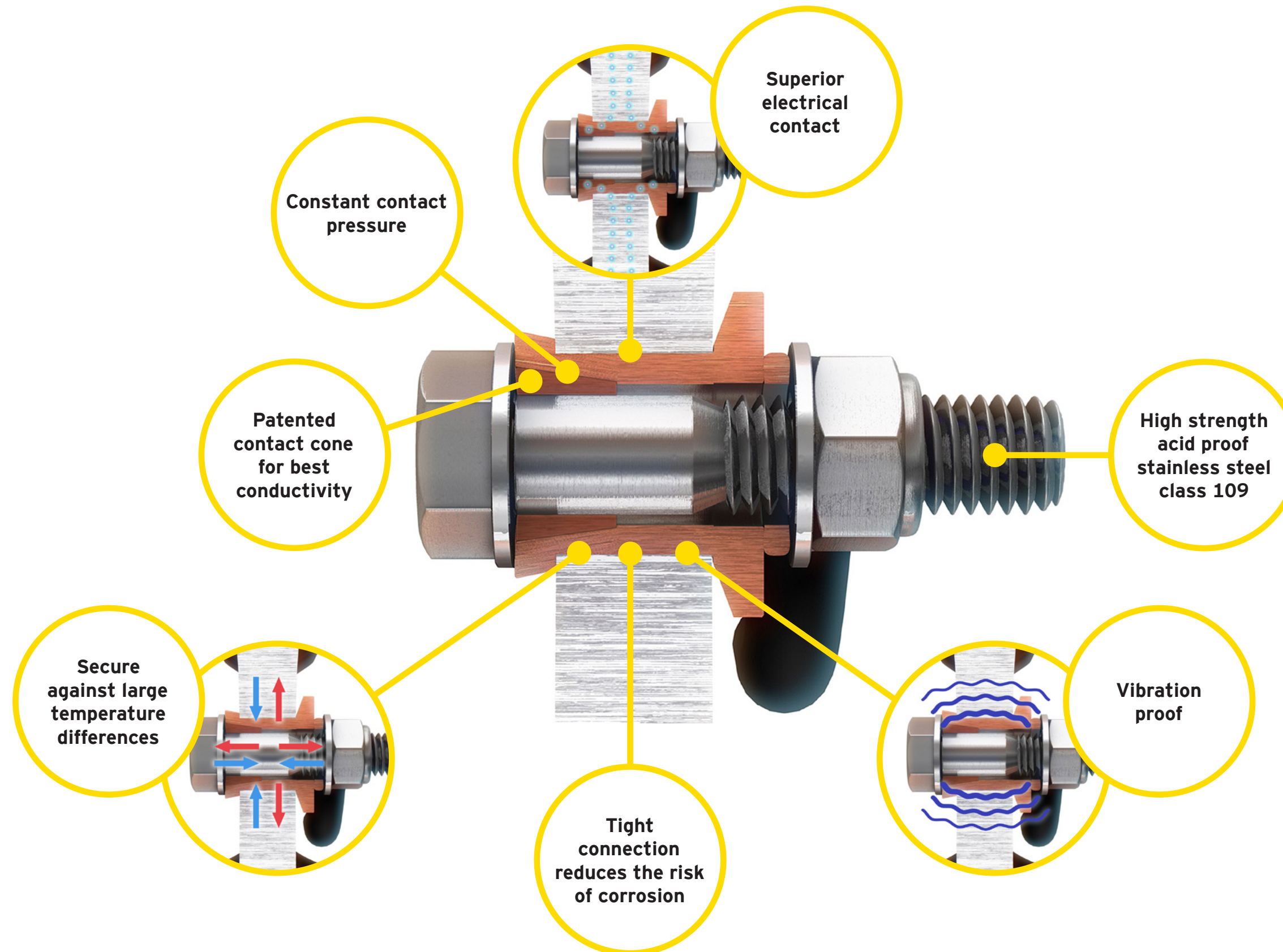
SafePlug® Combi enables the cables to be fixed on both sides of the rail and can, at any time, be taken off and on again. With the same SafePlug® Combi mounted throughout.



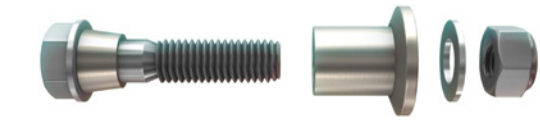
Tested by NEFI  
High Power  
Laboratory (ABB)

M10 - 25.000A during 1 sec  
44.000A peak value  
M12 - 35.000A during 1 sec  
58.000A peak value

## SafePlug® – Designed for harsh climate conditions



### SafePlug® HT – High Torque



#### SAFEPLUG® HT M10

Hole size: ø13,5 mm, Max. torque: 70 Nm  
SAFE 59033BD

#### SAFEPLUG® HT M10 TRV

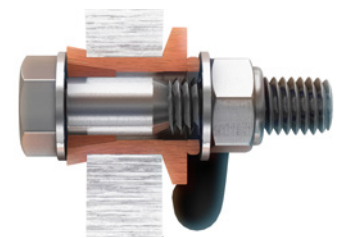
Hole size: ø13,5 mm, Max. torque: 70 Nm  
SAFE 59033BDT

#### SAFEPLUG® HT M12

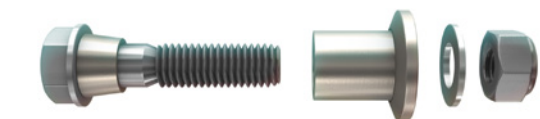
Hole size: ø19 mm, Max. torque: 120 Nm  
SAFE 59031BD

#### SAFEPLUG® HT M12 TRV

Hole size: ø19 mm, Max. torque: 120 Nm  
SAFE 59031BDT



### SafePlug® Basic

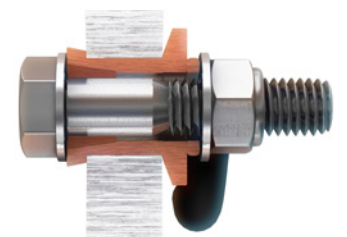


#### SafePlug® Basic M10

Hole size: ø13,5 mm, Max. torque: 40 Nm  
SAFE 59023BD

#### SafePlug® Basic M12

Hole size: ø19 mm, Max. torque: 80 Nm  
SAFE 59021BD



### SafePlug® Combi for multiple cables



#### SafePlug® Combi M10

Hole size: ø13,5 mm, Max. torque: 40 Nm  
SAFE 59026BD

#### SafePlug® Combi M12

Hole size: ø19 mm, Max. torque: 80 Nm  
SAFE 590225BD

